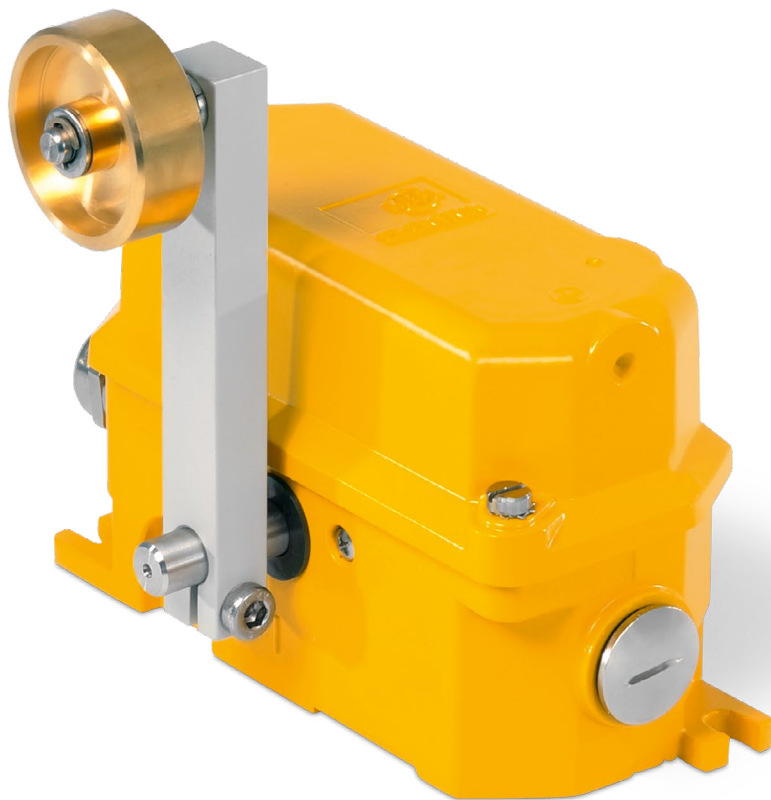


LIMIT SWITCH

HER

92.064 544.xxx



APPLICATION

The HER limit switches are used to monitor the end position of moving machine parts. With at least two switching points, a signal can be used for a pre-warning.

The HER limit switches are suitable for use in transportation, conveying, loading and mixing systems for bulk materials and are intended for use in fixed installations. In the installation position, they are triggered from one side.

The Kiepe limit switch type HER is compliant with the Low Voltage Directive 2014/35/EU and UKCA conformity is available.

It has a robust aluminum housing and can be equipped with up to 4 positively actuated changeover contacts with snap-action function. It has two adjustable switching points.

Note:

The limit switch may only be used in control circuits.

FUNCTION

The limit switch type HER operates when the actuating roller is approached and deflected by the machine part in the direction of rotation of the roller lever. The switching angle can be set for each switching contact by means of an adjustable cam roller.

In addition to the safety cut-out, this also enables an advance warning to be realized. When the machine part is reset, the roller lever returns automatically.

TECHNICAL DATA

Designation	Limit Switch Type HER
Type of actuation	Bidirectional via roller lever
Complies with	DIN EN 60947-5-1
Suited for	Control units in accordance with DIN EN 60204-1
Mechanics	
Enclosure	Aluminium
Coating	PU 2K-paint yellow, RAL 1004
Actuating lever	Aluminium, Roller: brass
Mounting	2 x M8
Deflection of roller lever (max.) [C]	+/-75°
Weight	1.9 kg
Electrical system	
Switching system (max.)	4 SPDT (snap action) positive-opening switches, self-cleaning
Switching range [A], [B]	2 x 12,5°, adjustable +/-10° 2 x 18° fix
Cable entry (included in scope of delivery)	Threaded holes 2x M25x1,5 with each 1x screwed cable gland: sealing area Ø 9 mm to Ø 17 mm; 1x dummy screw
Utilization category	AC-15: 230 V; 1.5 A DC-13: 60 V; 0.5 A DC-13: 24 V; 2 A
Connection cross section (max.)	2.5 mm ²
Protective conductor connection	Protection Class I / protective earthing
Rated insulation voltage U _i	250 V
Rated impulse withstand voltage U _{imp}	2.5 kV, Overvoltage category II, degree of pollution 3
Conventional thermal current I _{th}	6 A
Ambient conditions according to DIN EN 60947-5-5	
Permissible ambient temperature	-25°C... +70°C
Extended ambient temperature	-40°C... +70°C (type HER 7xx)
Protection rating (according to EN 60529)	IP65 / IP66 / IP67

SELECTION TABLE

Type	Contact configuration SPDT	Extended temperature range -40°C ...+70°C	Ventilation membran	Order number
HER 606	2			92.064 544.606
HER 706	2	x		92.064 544.706
Equipment options: (on request)				
Devices for two-wire bus-system, 4 SPDT, gold contacts, ventilation membran, LED lamp				
Spare parts and accessories:				
Cable gland M25x1,5; sealing area Ø11mm to Ø16 mm				113.52.02.20.01
Screw plug; M25 x 1,5				113.52.87.20.02
Cover HER				93.066 839.004
Aluminium lever with brass roller, Ø 50mm				94.039 708.002

MOUNTING

The limit switch HER **1** is fastened to a substructure with 2 M8 screws each. It can be mounted on the ends of transport systems. Devices on the transport trolleys actuate the limit switches upon reaching the end of the transport path. (Recommended geometry of the approach setting max. 45° **3**)

The roller lever is interchangeable and can be freely fixed on the switch axis. The switching points are cam-controlled and adjustable. **2**

The electrical connection is made when the device is open via the cable gland included in the scope of delivery directly to the connection glands of the switching elements.

Note:

The red transport locks must be completely removed and replaced with the supplied screw plugs.

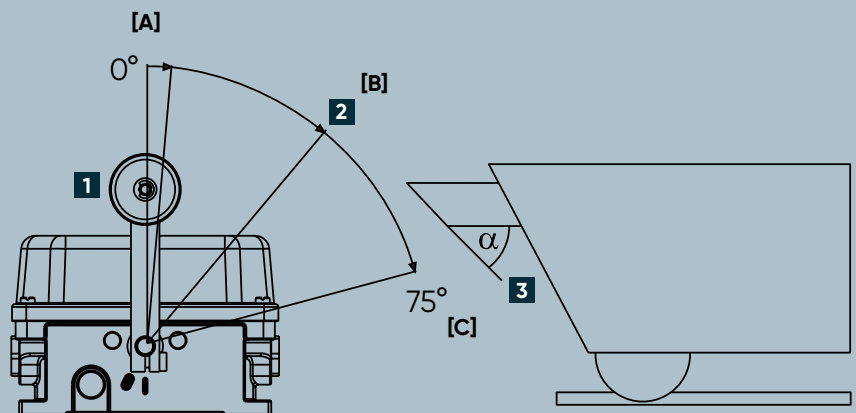
MOUNTING DIAGRAM

[A], [B] Switching range:

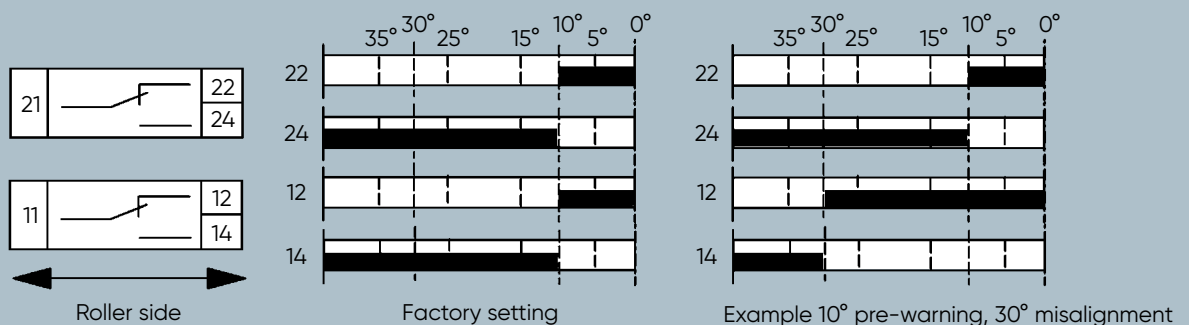
- 2 x 12,5°, adjustable +/-10°;
- 2 x 18° fix

[C] Deflection of roller lever (max.): +/-75°

- 1** Roller lever
- 2** Switching Point (adjustable)
- 3** Approach ramp (α = max. 45°)



CONNECTION DRAWING



DIMENSIONS

